

# Third International Symposium on Focal Therapy and Imaging of Prostate and Kidney Cancer

Save  
The  
Date

**February 24-27, 2010**

Presented by  
**Duke Comprehensive Cancer Center**

in collaboration with

**University of Southern California and  
Academic Medical Center (AMC), Amsterdam**

The symposium will feature international experts who will provide insight into image-guided diagnosis and minimally invasive focal, gland-preserving treatment for the prostate or kidney cancer patient.



**DukeMedicine**



## Duke Comprehensive Cancer Center

in collaboration with

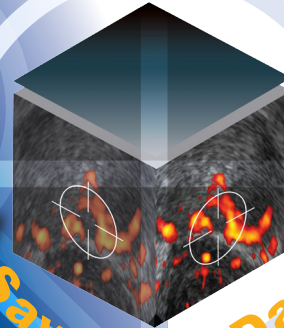
University of Southern California and  
Academic Medical Center (AMC), Amsterdam  
present

# Third International Symposium on Focal Therapy and Imaging of Prostate and Kidney Cancer

**February 24-27, 2010** • The Fairmont Hotel  
2401 M Street, NW • Washington D.C. 20037  
[www.fairmont.com/washington](http://www.fairmont.com/washington)

Duke Comprehensive Cancer Center  
DUMC 2714 • Durham, NC 27710  
391-8920

Bulk Mail  
U.S. Postage  
**PAID**  
Durham, NC  
Permit No. 60



Save The Date

This conference is designed for urologists, radiation oncologists, medical oncologists, radiologists, uropathologists, molecular biologists, biomedical engineers and other clinicians with an interest in diagnosis and treatment of prostate and kidney cancer.

- To Register:** Online registration opens on July 1, 2009.  
Visit [www.cancer.duke.edu/focaltherapyyme](http://www.cancer.duke.edu/focaltherapyyme) to register  
and for more information.
- Fee:** Early Registration (before November 1, 2009): \$400  
Late Registration: \$475  
Residents, Fellows, Nurses, Advocacy Groups: \$175

A block of rooms has been reserved at the Fairmont Washington.  
Call **1 (800) 257-7544** (U.S. and Canada), or **800 0441 1414** (international).  
Ask for the Focal Therapy Workshop special rate.  
See [www.fairmont.com/washington](http://www.fairmont.com/washington) for additional information.



*Additional registration materials to follow*

For additional information, contact Mary Ruemker at  
[mary.ruemker@duke.edu](mailto:mary.ruemker@duke.edu)